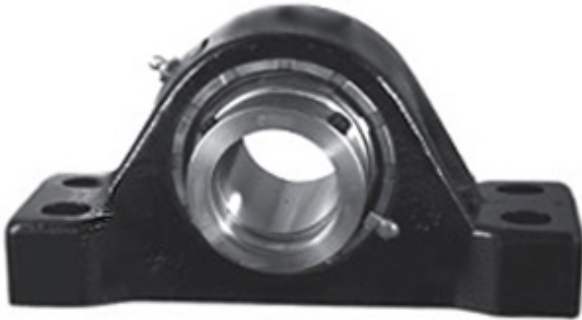




## NTN Bearing de Mexico, S.A.

3.938 Inch | 100.025 Millimeter x 5.969 Inch |  
 151.613 Millimeter x 4.25 Inch | 107.95 Millimeter  
 REXNORD MEP6315F Pillow Block Bearings



Bearing No. MEP6315F

MEP6315F Bearing 2D drawings and 3D CAD models

Category	Pillow Block Bearings
Inventory	0.0
Manufacturer Name	REXNORD
Minimum Buy Quantity	N/A
Weight	29.42
EAN	0793699903300
Product Group	M06288
Number of Mounting Holes	4
Mounting Method	Tapered Adapter Sleeve
Housing Style	4 Bolt Pillow Block
Rolling Element	Spherical Roller Bearing
Housing Material	Cast Iron
Expansion / Non-expansion	Non-expansion
Mounting Bolts	3/4 Inch
Relubricatable	Yes
Insert Part Number	6315U
Seals	Heavy Contact
Housing Configuration	1 Piece Solid
Inch - Metric	Inch
Other Features	Double Row
Long Description	4 Bolt Pillow Block; 3-15/16" Bore; 4-1/4" Base to Center Height; Tapered Adapter Sleeve Mount; Spherical Roller Bearing; 12" Minimum Bolt Spacing; 13"



## NTN Bearing de Mexico, S.A.

	Bolt Spacing Maximum; Relubr
Category	Pillow Block
UNSPSC	31171511
Harmonized Tariff Code	8483.20.40.80
Noun	Bearing
Keyword String	Pillow Block
Manufacturer URL	<a href="http://www.rexnord.com">http://www.rexnord.com</a>
Manufacturer Item Number	MEP6315F
Manufacturer Internal Number	0190330
Weight / LBS	64.8
Nominal Bolt Center to Center	12.5 Inch   317.5 Millimeter
Actual Bolt Center to Center	0 Inch   0Millimeter
B	4.25 Inch   107.95 Millimeter
D	5.969 Inch   151.613 Millimeter
Bolt Spacing Maximum	13 Inch   330.2Millimeter
Bolt Spacing Minimum	12 Inch   304.8Millimeter
d	3.938 Inch   100.025 Millimeter